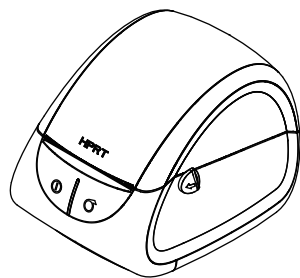


Quick Star Guide

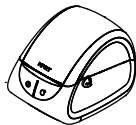
LPQ118



Xiamen Hanin Electronic Technology Co.Ltd.
ADD: 5F,8#,Aide Airport Industrial Park,Huli
District,Xiamen,China 361009
Tel.: +86-(0)592-5885993
Fax: +86-(0)592-5885992
Web: www.hpert.com

Packing List

■ Standard Accessories



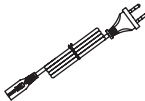
Printer



Quick Star Guide



CD



Power Cord

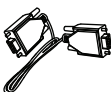


Power Adapter



Cable Fastener

■ Optional Accessories



Serial Cable

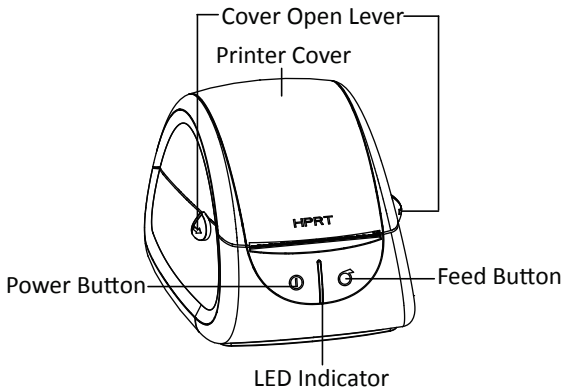


USB Cable

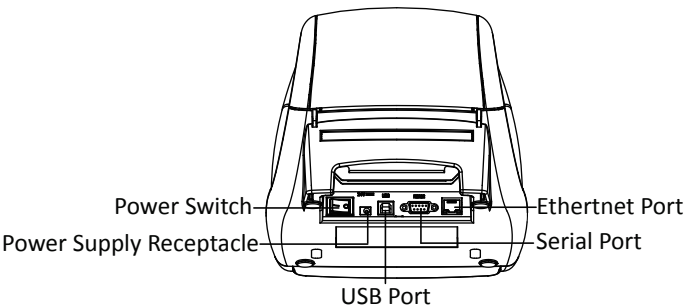
Note:Power cord varies by local or region.

Appearance & Components

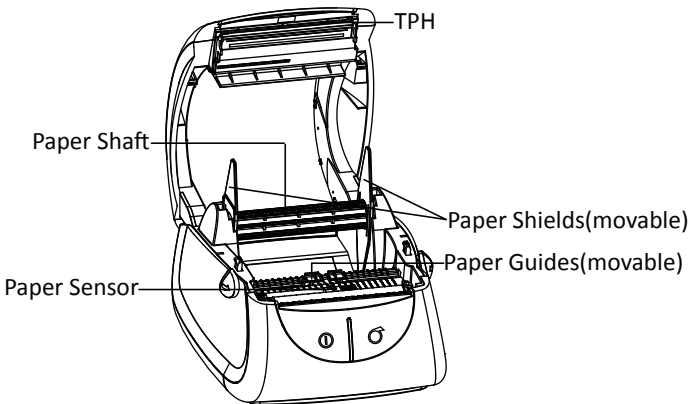
■ Front



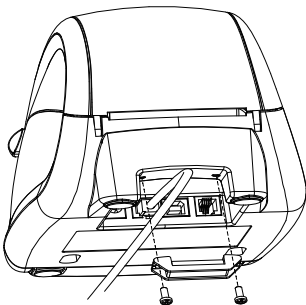
■ Rear



■ Insight



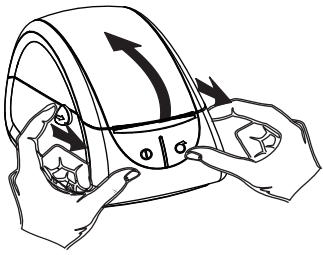
■ Install the cables fastener



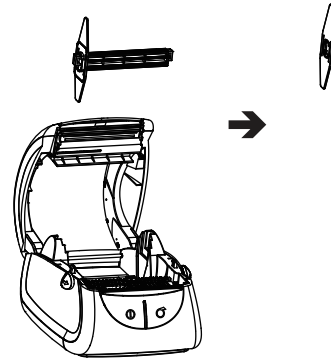
Note:Views above are for reference only, ports differ by your choice.

Media Loading

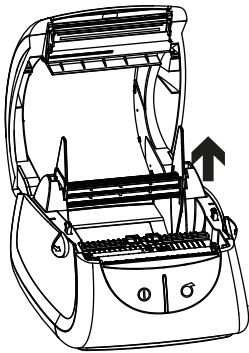
1. Press the cover open lever simultaneously and lift up the printer cover.



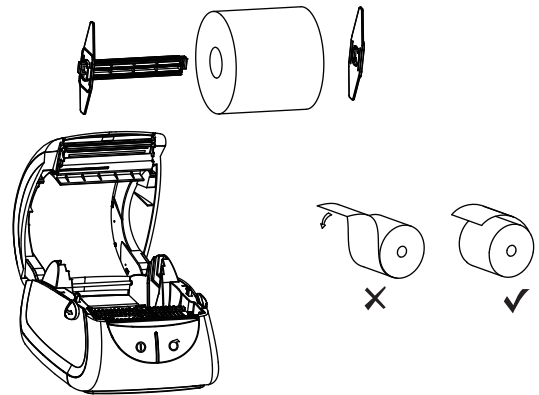
3. Pull out the paper shield.



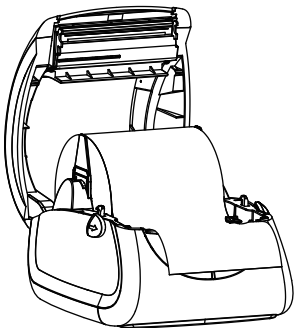
2. Hold the center of paper shaft and slide upwards to pull out.



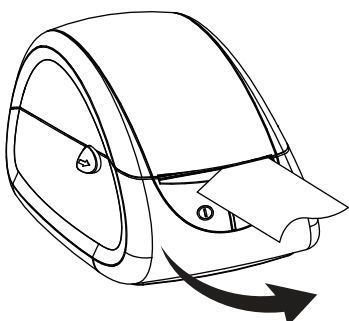
4. Insert the media and attention the thermosensitive side should face TPH.



5. Put back the paper shield and then shaft, and pull some extra paper out through the paper guides.

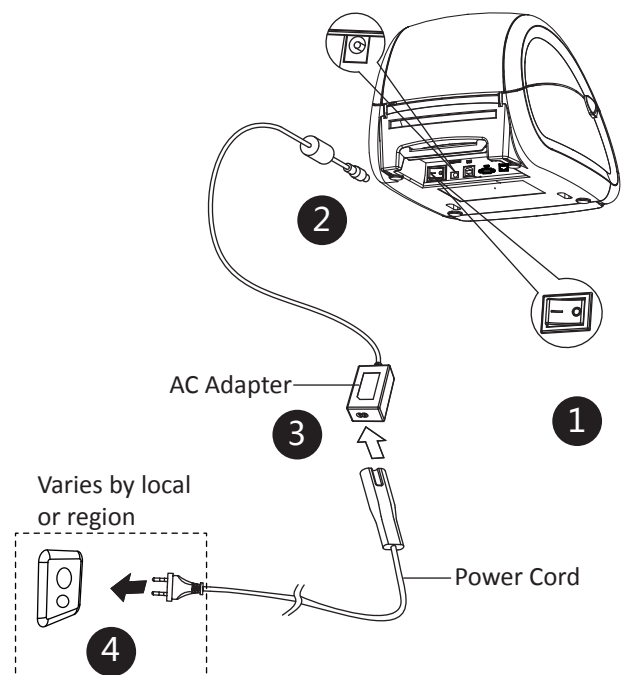


6. Close the printer cover and tear the extra paper in the direction of printer.



Power Connection

1. Make sure the printer is power "Off".
2. Connect the AC adapter with power interface.
3. Connect the AC adapter with power cord.
4. Plug the other side of power cord into the socket outlet.



Note: Windows driver installation please see *LPQ118 User Manual*.